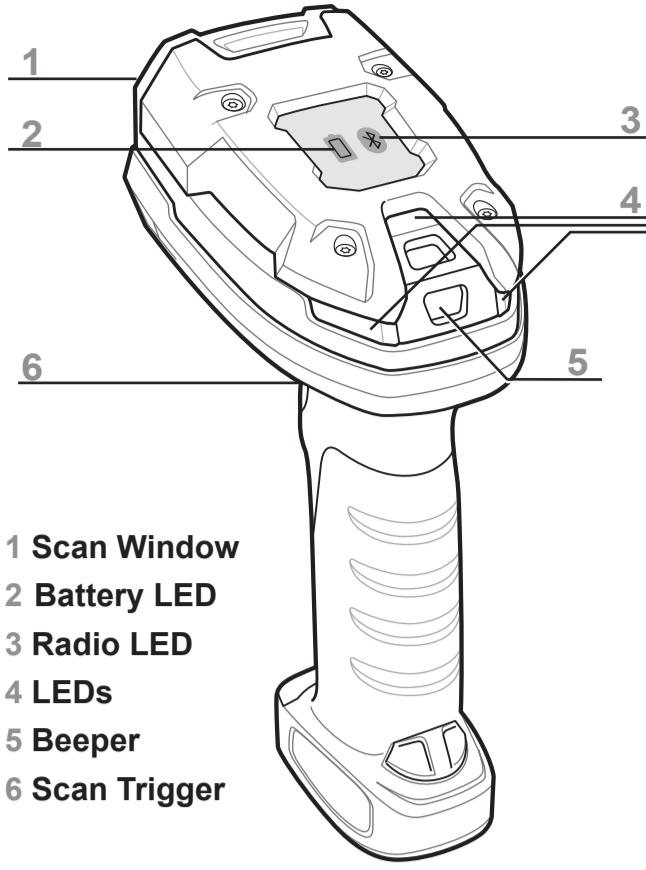
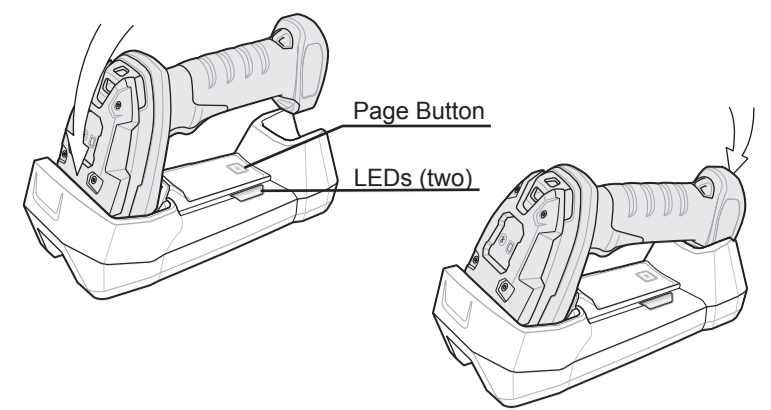


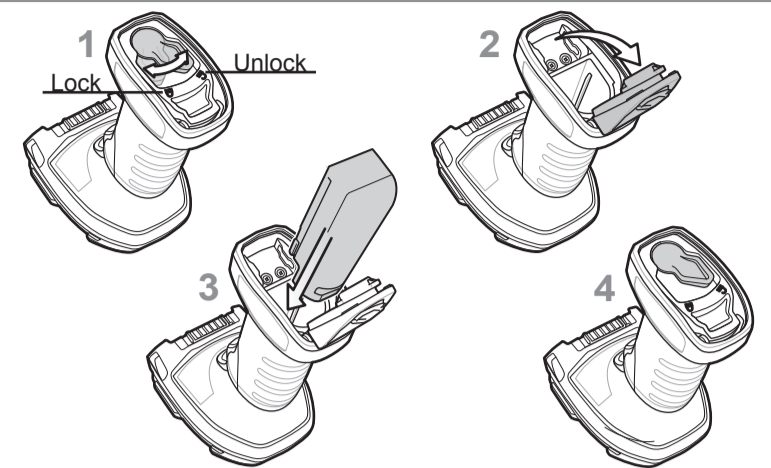
Quick Start Guide



- 1 Scan Window
- 2 Battery LED
- 3 Radio LED
- 4 LEDs
- 5 Beeper
- 6 Scan Trigger

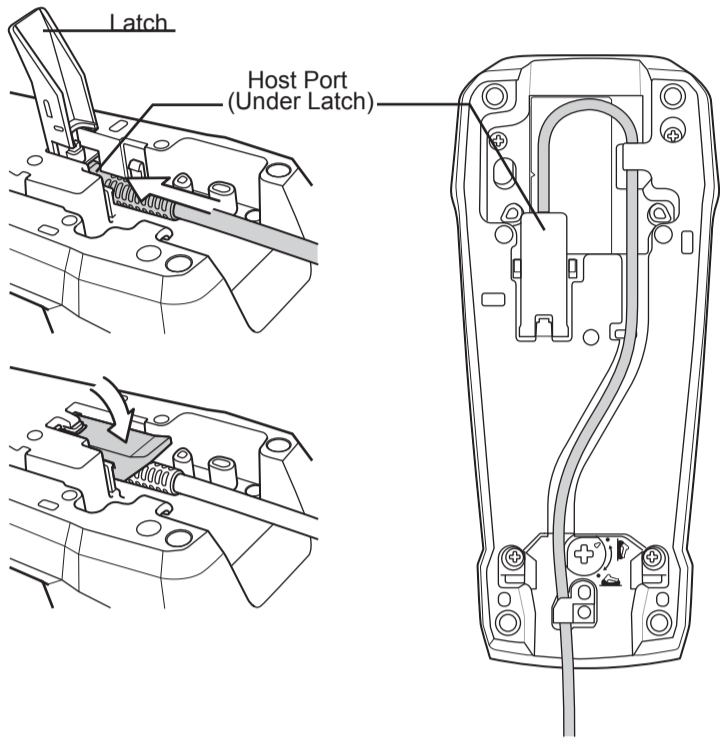


Battery Insertion and Removal



Important: A PowerPrecision+ 3100 mAh Li-Ion rechargeable battery is included with the wireless version of the HS-360X.

Cradle Cable Connection



Return to Factory Defaults / Add an Enter Key

**Return to Factory Defaults**  
Scan the symbol below to return scanner parameters to factory defaults.



**Add an Enter Key (Carriage Return / Line Feed)**  
Scan the symbol below to add an Enter key after scanned data.



Add a Tab Key

**Add a Tab Key**  
Scan the symbol below to add a Tab key after scanned data.



USB Caps Lock Override Options

USB - OVERRIDE CAPS LOCK KEY (ENABLE)



\*USB - DO NOT OVERRIDE CAPS LOCK KEY (DISABLE)

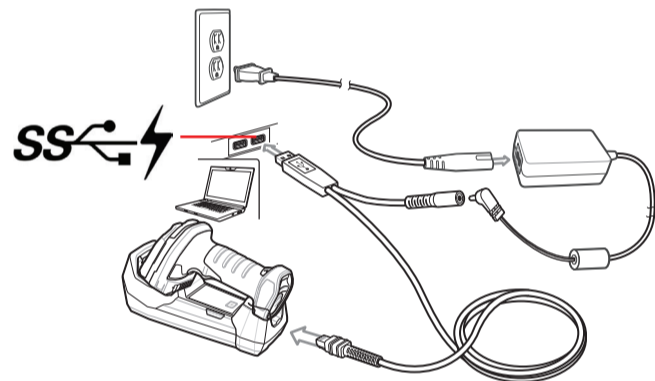


Step 1 – Set Up Host Interface

USB

**Note:** Cables may vary depending on configuration.

When connecting the HS-360X and cradle to a PC, look for a USB port with a lightning bolt icon similar to the one below. This icon indicates that the port is higher-powered and is intended for charging USB devices.



Scan one of the symbols below.

The interface cable automatically detects the host interface type and uses the default setting. If the default (\*) does not meet your requirements, scan the other host symbol below.



Step 2 – Install WebLink<sub>PC</sub> and Connect

Install

- The WebLink<sub>PC</sub> installer is found at the following two locations:
- In the Download Center at: [www.microscan.com/downloadcenter](http://www.microscan.com/downloadcenter)
  - On the Omron Microscan Tools Drive: P/N 37-000010-01.
1. Download WebLink<sub>PC</sub> and follow the installation prompts.
  2. Double-click the WebLink<sub>PC</sub> icon to run the program.

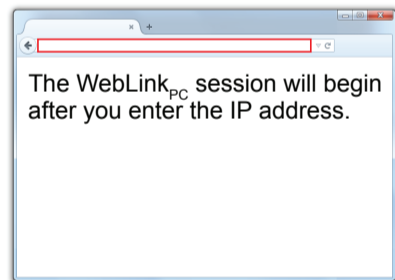
- Minimum PC Requirements**
- Intel® Core™2 Duo Processor (Core™i3 recommended)
  - Microsoft Windows 7 32-bit (Windows 7 64-bit or Windows 10 recommended)
  - Internet Explorer 11 or higher, Edge, Firefox, or Opera (Chrome recommended)
  - 1 GB/128 MB Video RAM (2 GB RAM/128 MB Video RAM recommended)
  - 100 MB hard drive space (500 MB recommended)
  - 16-bit color display (32-bit recommended)
  - 3.0 Windows Experience Index (4.0 recommended)

Connect

To start WebLink<sub>PC</sub>, double-click the icon placed on your desktop during installation.

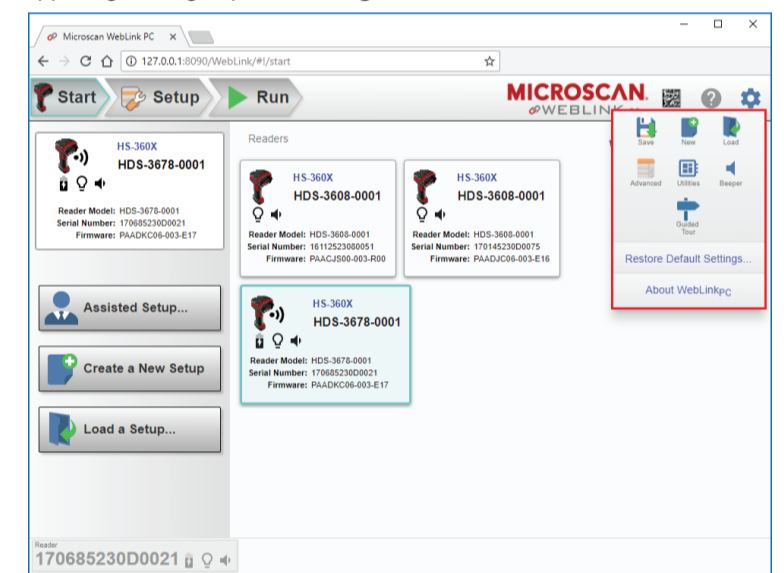


You can also start WebLink<sub>PC</sub> by opening a browser of your choice and typing <http://localhost:8090> or <http://127.0.0.1:8090> in the address bar.



Step 3 – Explore the Start View

The **Start** view shows all the scanners available to the system. The **Reader Model**, **Serial Number**, and **Firmware Version** of each scanner are displayed. This view also allows you to choose **Assisted Setup**, **Create a New Setup**, or **Load a Setup**. The **Gear icon** in the upper right brings up the **Settings Menu**.



Step 4 – Create or Load a Setup

Assisted Setup

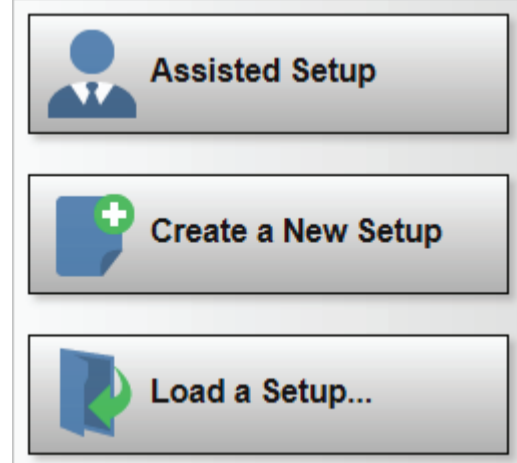
When you click the **Assisted Setup** button in the **Start** view, a dialog appears asking a series of application-related questions. Based on your answers, WebLink<sub>PC</sub> generates your initial setup automatically. Once the setup is created, you can fine-tune its parameters in the **Setup** view.

Create a New Setup

The **Start** view also allows you to create a **New Setup** without using **Assisted Setup**. When you click the **Create a New Setup** button, WebLink<sub>PC</sub> searches for any differences from default in the scanner parameters. If no differences from default are found, the **Setup** view appears. If differences from default are found, an alert appears asking if you want to restore default settings.

Load a Setup

Select **Load a Setup** to load an existing .ris WebLink<sub>PC</sub> setup file.

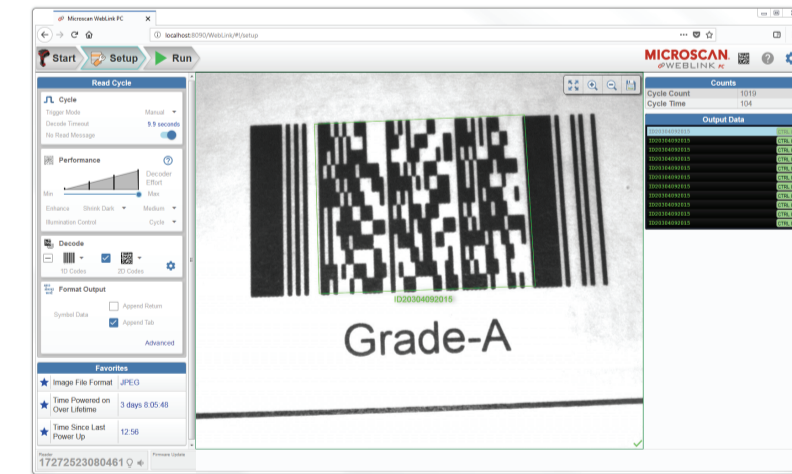


Step 5 – Explore the Setup View

The **Setup** view allows you to configure the scanner, view the current captured image, and view decoded symbol data.

The following read cycle steps are shown at the left side of the screen:

- **Cycle**
- **Performance**
- **Decode**
- **Format Output**

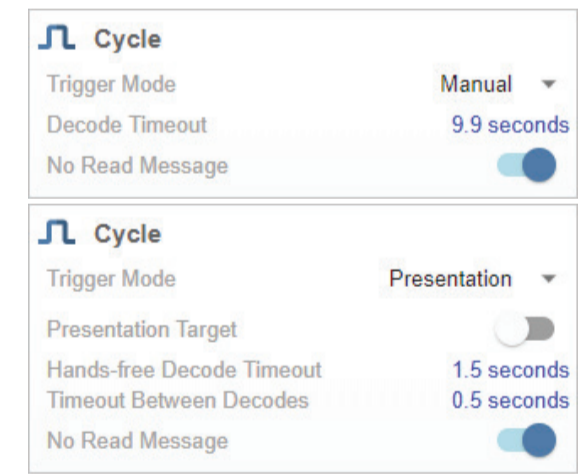


Step 6 – Configure the Scanner

Cycle Step

The **Cycle** step allows you to choose between **Manual** and **Presentation** trigger modes. In **Manual** mode, a decode is attempted when you pull the trigger. In **Presentation** mode, the read cycle begins when a symbol is detected moving into the scanner's field of view.

**Note:** The scanner is automatically set to **Presentation** mode when placed in the HS-360X Stand.



Step 6 – Configure the Scanner (Continued)

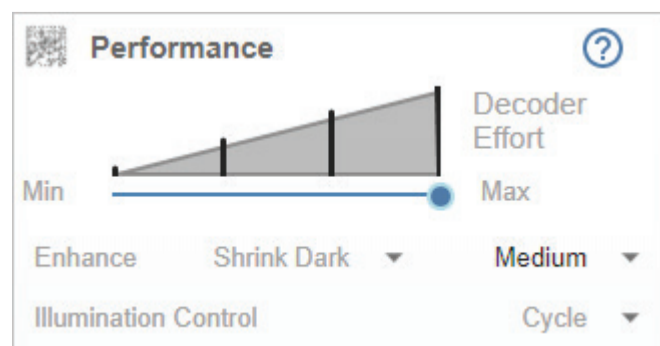
Performance Step (DPM Optimization)

The **Performance** step allows you to optimize the scanner for **Direct Part Mark (DPM)** decoding. A DPM is a permanent mark created by laser etch, chemical etch, or other method, directly on a substrate. DPMs are often harder to read than other symbols, and may require a few attempts before finding optimal settings. The **Decoder Effort** slider has four settings: **Level 1**, corresponding to **Min** on the slider; **Level 2**; **Level 3**; and **Level 4**, corresponding to **Max**. As **Decoder Effort** is moved toward **Max**, the decoder spends an increasing amount of time trying to decode the symbol.

In **Level 4**, you can also enable the **Enhance** option, which improves readability by allowing additional processing for poorly-formed marks.

The **Illumination** options are **Direct**, **Indirect**, and **Cycle**.

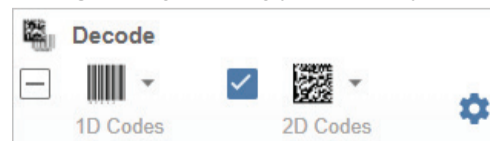
Clicking the **Question Mark icon** brings up a dialog with more detail about each level of decoder effort.



Step 6 – Configure the Scanner (Continued)

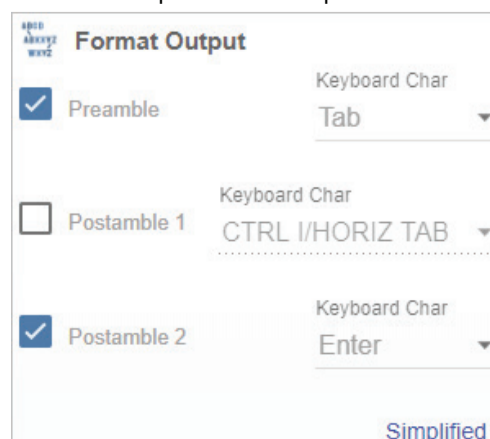
Decode Step

The **Decode** step allows you to select which symbologies to enable and disable. Clicking the **1D** and **2D** checkboxes will enable or disable all the symbologies in that group. The **Gear icon** brings up a **Symbology Settings** dialog, allowing you to modify specific parameters.



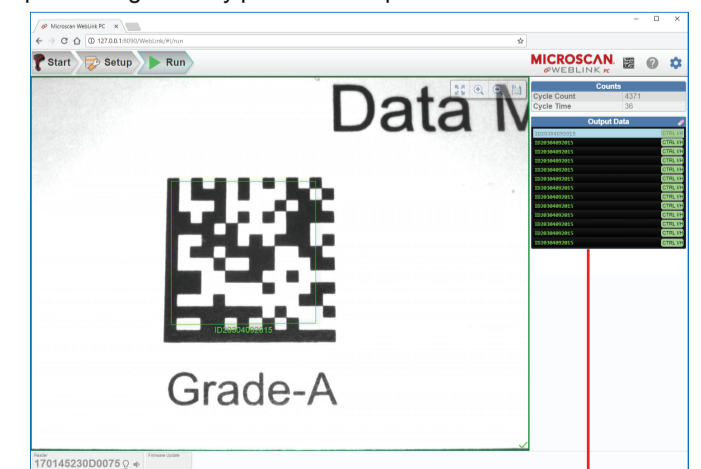
Format Output Step

**Format Output** allows you to configure preambles and postambles to add to symbol data output. The **Simplified** version of this control allows you to **Append Return** or **Append Tab** after each string of data output. The **Advanced** version allows you to choose from a wide variety of keyboard characters that can be output as a preamble or postamble. You can also add a second postamble if required.



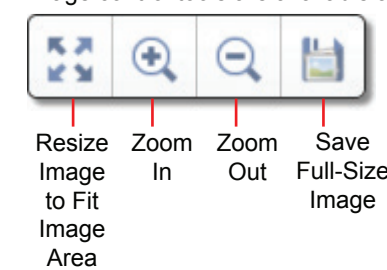
Step 7 – Run the Application

The **Run** view allows you to keep track of your application during runtime. The current captured image is shown along with a row of image control tools. A history of decoded symbol data is shown in the right pane along with any preambles or postambles that have been defined.



The **Output Data** display in the right pane shows a list of previous read cycle results. Each result is selectable and erasable.

Image control tools are available at the upper right of the image view.



# HS-360X Wireless Handheld DPM Scanner

POST IN WORK AREA

## HS-360X Aiming



For best results, aim the dot at the center of the symbol.

## Sample Symbols



Data Matrix  
OmronMicroscan1234567890



QR Code  
OmronMicroscan1234567890



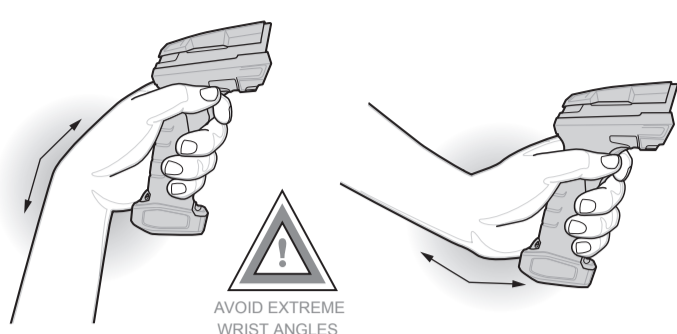
Code 39  
OMRON1234



Interleaved 2 of 5  
1234567890

## RECOMMENDED USAGE GUIDE - OPTIMUM BODY POSTURE

### Avoid Extreme Wrist Angles



### Avoid Bending



### Avoid Reaching



### Health and Safety Recommendation

- Ergonomic Recommendations**
- Caution: In order to avoid or minimize the potential risk of ergonomic injury follow the recommendations below. Consult with your local Health & Safety Manager to ensure that you are adhering to your company's safety programs to prevent employee injury.
- Reduce or eliminate repetitive motion
  - Maintain a natural position
  - Reduce or eliminate excessive force
  - Reduce or eliminate vibration
  - Perform tasks at correct heights
  - Keep objects that are used frequently within easy reach
  - Reduce or eliminate direct pressure
  - Provide adjustable workstations
  - Provide adequate clearance
  - Provide a suitable working environment
  - Improve work procedures.

## BEEPER INDICATIONS

Indication	Beeper Sequence
Power up	Low/medium/high beep
Barcode decoded	Medium beep
Transmission error detected; data is ignored	4 long low beeps
Successful parameter setting	High/low/high/low beep
Correct programming sequence performed	High/low beep
Incorrect programming sequence, or <b>Cancel</b> barcode scanned	Low/high beep

Note: In addition to the System/Decode LEDs, the DS3678 cordless digital scanner has a Radio and Battery LED gauge. Refer to the *DS3678 Product Reference Guide* for detailed information.

## LED INDICATIONS

Handheld Scanning	
Indication	LED Indicator
Scanner is on and ready to scan, or no power to scanner	Off
Barcode is successfully decoded	Green
Transmission error	Red
Hands-Free (Presentation) Scanning	
No power to scanner	Off
Scanner is ready to scan	Green
Barcode is successfully decoded	Off Momentarily
Transmission error	Red

## TROUBLESHOOTING

Scanner not working	
No power to scanner	Check system power.
Scanner is disabled	Ensure that correct host interface cable is used.
Scanner decoding barcode, but data not transmitting to host	
Host interface not configured properly	Scan appropriate host parameter barcodes.
Interface cable is loose	Ensure all cable connections are secure.
Invalid Rule	Program the correct rules.
Scanner not paired to cradle	Scan cradle pairing barcode.

Scanner not decoding barcode	
Scanner not programmed for barcode type	Ensure scanner is programmed to read type of barcode being scanned.
Barcode unreadable	Ensure barcode is not defaced; try scanning test barcode of same barcode type.
Distance between scanner and barcode incorrect	Move scanner closer to, or further from barcode.
Scanned data incorrectly displayed on host	
Host interface not configured properly	Scan appropriate host parameter barcodes.
Region improperly configured	Select appropriate country and language encoding scheme.

## REGULATORY INFORMATION

### Warranty

For current warranty information, see: [www.microscan.com/warranty](http://www.microscan.com/warranty).

### Technical Support

For technical support, e-mail: [Americas\\_support@microscan.com](mailto:Americas_support@microscan.com), [EMEA\\_support@microscan.com](mailto:EMEA_support@microscan.com), [APAC\\_support@microscan.com](mailto:APAC_support@microscan.com), [China\\_support@microscan.com](mailto:China_support@microscan.com)

### Waste Electrical and Electronic Equipment (WEEE)

English: For EU Customers: All products at the end of their life must be returned to Omron Microscan for recycling. For information on how to return product, please go to: [www.microscan.com](http://www.microscan.com).

Bulgarian: За клиенти от ЕС: След края на ползването им живот всички продукти трябва да се връщат на Omron Microscan за рециклиране. За информация относно връщането на продукти, моля отидете на адрес: [www.microscan.com](http://www.microscan.com).

Ceština: Pro zákazníky z EU: Všechny produkty je nutné po skončení jejich životnosti vrátit společnosti Omron Microscan k recyklaci. Informace o způsobu vrácení produktu najdete na webové stránce: [www.microscan.com](http://www.microscan.com).

Dansk: Til kunder i EU: Alle produkter skal returneres til Omron Microscan til recyklering, når de er udtjente. Læs oplysningerne om returnering af produkter på: [www.microscan.com](http://www.microscan.com).

Deutsch: Für Kunden innerhalb der EU: Alle Produkte müssen am Ende ihrer Lebensdauer zum Recycling an Omron Microscan zurückgesandt werden. Informationen zur Rücksendung von Produkten finden Sie unter [www.microscan.com](http://www.microscan.com).

Ελληνικά: Για πελάτες στην Ε.Ε.: Όλα τα προϊόντα, στο τέλος της διάρκειας ζωής τους, πρέπει να επιστρεφθούν στην Omron Microscan για ανακύκλωση. Για περισσότερες πληροφορίες σχετικά με την επιστροφή ενός προϊόντος, επισκεφθείτε τη διεύθυνση [www.microscan.com](http://www.microscan.com) στο Διαδίκτυο.

Eesti: EL klientidele: kõik tooted tuleb nende eluea lõppedes tagastada taaskasutamise eesmärgil Omron Microscan'ile. Lisainformatsiooni saamiseks toote tagastamise kohta külastage palun aadressi: [www.microscan.com](http://www.microscan.com).

Español: Para clientes en la Unión Europea: todos los productos deberán entregarse a Omron Microscan al final del ciclo de vida para que sean reciclados. Si desea más información sobre cómo devolver un producto, visite: [www.microscan.com](http://www.microscan.com).

Français : Clients de l'Union Européenne : Tous les produits en fin de cycle de vie doivent être retournés à Omron Microscan pour recyclage. Pour de plus amples informations sur le retour de produits, consultez : [www.microscan.com](http://www.microscan.com).

Italiano: per i clienti dell'UE: tutti i prodotti che sono giunti al termine del rispettivo ciclo di vita devono essere restituiti a Omron Microscan al fine di consentire il riciclaggio. Per informazioni sulle modalità di restituzione, visitate il seguente sito Web: [www.microscan.com](http://www.microscan.com).

Latviešu: ES klientiem: visi produkti pēc to kalpošanas mūža beigām ir jānodāvina atpakaļ Omron Microscan otrreizējai pārstrādei. Lai iegūtu informāciju par produktu nogādāšanu Omron Microscan, lūdz, skatīt: [www.microscan.com](http://www.microscan.com).

Lietuvių: ES vartotojams: visi gaminiai, pasibaigus jų eksploatacijos laikui, turi būti grąžinti utilizuoti į kompaniją „Omron Microscan“. Daugiau informacijos, kaip grąžinti gaminį, rasite: [www.microscan.com](http://www.microscan.com).

Magyar: Az EU-ban vásárlóknak: Minden törlendék terméket a Omron Microscan vállalathoz kell eljuttatni újraszamosítás céljából. A termék visszajuttatásának módjával kapcsolatos tudnivalókat látogathat el a [www.microscan.com](http://www.microscan.com) weboldalon.

Malti: Għal klijenti fl-UE: il-prodotti kollha li jkunni waslu fl-aħħar tal-ħajja ta' l-uzu tagħhom, idurli jgħu rritornati għand Omron Microscan għar-riċiklaġġ. Għal aktar taġġir dwar kif għandek tirritorna l-prodott, jekk jogħġbok zur: [www.microscan.com](http://www.microscan.com).

Nederlands: Voor klanten in de EU: alle producten dienen aan het einde van hun levensduur naar Omron Microscan te worden teruggezonden voor recycling. Raadpleeg [www.microscan.com](http://www.microscan.com) voor meer informatie over het terugzenden van uw producten.

Polski: Klienci z obszaru Unii Europejskiej: Produkty wycofane z eksploatacji należą zwrócić do firmy Omron Microscan w celu ich utylizacji. Informacje na temat zwrótu produktów znajduj się na stronie internetowej [www.microscan.com](http://www.microscan.com).

Português: Para clientes da UE: todos os produtos no fim de vida devem ser devolvidos à Omron Microscan para reciclagem. Para obter informações sobre como devolver o produto, visite: [www.microscan.com](http://www.microscan.com).

Românesc: Pentru clienții din UE: Toate produsele, la sfârșitul duratei lor de funcționare, trebuie returnate la Omron Microscan pentru reciclare. Pentru informații despre returnarea produsului, accesați: [www.microscan.com](http://www.microscan.com).

Slovenčina: Pre zákazníkov z krajín EU: Všetky výrobky musia byť po uplynutí doby ich životnosti vrátené spoločnosti Omron Microscan na recykláciu. Blížšie informácie o vrátení výrobkov nájdete na: [www.microscan.com](http://www.microscan.com).

Slovenski: Za kupce v EU: vsi izdelki se morajo po poteku življenjske dobe vrniti podjetju Omron Microscan za reciklajo. Za informacije o vrabilih izdelka obiščite: [www.microscan.com](http://www.microscan.com).

Turkish: AB Müşterileri için: Kullanım süresi dolan tüm ürünler geri dönüştürme için Omron Microscan'ya iade edilmelidir. Ürünlerin nasıl iade edileceği hakkında bilgi için lütfen şu adresi ziyaret edin: [www.microscan.com](http://www.microscan.com).

Hrvatski: Za kupce u Europskoj uniji: Svi se proizvodi po isteku vijeka trajanja moraju vratiti tvrtki Omron Microscan na recikliranje. Informacije o načinu vraćanja proizvoda potražite na web-stranici: [www.microscan.com](http://www.microscan.com).

### Regulatory Information

This device is approved under Zebra Technologies Corporation. This guide applies to Model Number: DS3678. All Zebra devices are designed to be compliant with rules and regulations in locations they are sold and will be labeled as required. Local language translations are available at the following website: <http://www.zebra.com/support>. Any changes or modifications to Zebra equipment, not expressly approved by Zebra, could void the user's authority to operate the equipment.

**Caution:** Only use Omron Microscan-approved and UL-listed accessories, battery packs, and battery chargers. Do NOT attempt to charge damp/wet mobile computers or batteries. All components must be dry before connecting to an external power source. Declared HDS-3768-0001 maximum operating temperature: 50°C. Declared maximum operating temperature when used with 12-9000937-01: 50°C.

**Bluetooth® Wireless Technology**  
This is an approved Bluetooth® product. For more information or to view the End Product Listing, visit <https://www.bluetooth.org/go/listings.cfm>.

**Wireless Device Country Approvals**  
Note: this section is only applicable to WW/WR/IEU configurations. Regulatory markings, subject to certification, are applied to the device signifying the radio(s) is/are approved for use in the following countries: United States, Canada, Japan, China, S. Korea, Australia, and Europe. Please refer to the Declaration of Conformity (DoC) for details of other country markings. This is available at <http://www.microscan.com/support>.

Note: Europe includes, Austria, Belgium, Bulgaria, Czech Republic, Cyprus, Denmark, Estonia, Finland, France, Germany, Greece, Hungary, Iceland, Ireland, Italy, Latvia, Liechtenstein, Lithuania, Luxembourg, Malta, Netherlands, Norway, Poland, Portugal, Romania, Slovak Republic, Slovenia, Spain, Sweden, Switzerland and the United Kingdom.

**Caution:** Operation of the device without regulatory approval is illegal.

### Warnings for Use of Wireless Devices

**Caution:** Please observe all warning notices with regard to the usage of wireless devices.

### Safety in Hospitals

Wireless devices transmit radio frequency energy and may affect medical electrical equipment. Wireless devices should be switched off whenever you are requested to do so in hospitals, clinics or health care facilities. These requests are designed to prevent possible interference with sensitive medical equipment. Pacemakers  
Pacemaker manufacturers recommended that a minimum of 15cm (6 inches) be maintained between a handheld wireless device and a pacemaker to avoid potential interference with the pacemaker. These recommendations are consistent with independent research and recommendations by Wireless Technology Research, Persons with Pacemakers:  
• Should ALWAYS keep the device more than 15cm (6 inches) from their pacemaker when turned ON.  
• Should not carry the device in a breast pocket.  
• Should use the ear furthest from the pacemaker to minimize the potential for interference  
• If you have any reason to suspect that interference is taking place, turn OFF your device.

**Other Medical Devices**  
Please consult your physician or the manufacturer of the medical device, to determine if the operation of your wireless product may interfere with the medical device.

### RF Exposure Guidelines

**Safety Information**  
• **Reducing RF Exposure – Use Properly**  
Only operate the device in accordance with the instructions supplied.  
• **International**  
The device complies with internationally recognized standards covering human exposure to electromagnetic fields from radio devices. For information on "International" human exposure to electromagnetic fields refer to the Omron Microscan Declaration of Conformity (DoC) at <http://www.microscan.com/support>.  
• **Europe - Handheld Devices**  
To comply with EU RF exposure requirements, this device must be operated in the hand with a minimum separation distance of 0 cm or more from a person's body. Other operating configurations should be avoided.  
• **US and Canada**  
• **Co-located Statement**  
To comply with FCC RF exposure compliance requirement, the antenna used for this transmitter must not be co-located or operating in conjunction with any other transmitter/antenna except those already approved in this filing.  
• **Handheld Devices**  
This device was tested for typical body worn or handheld operation. Use only Zebra tested and approved belt-clips, holsters, and similar accessories to ensure FCC Compliance. The use of third-party belt clips, holsters, and similar accessories may not comply with FCC RF exposure compliance requirements, and should be avoided. To satisfy US and Canadian RF exposure requirements, a transmitting device must operate with a minimum separation distance of 0 cm or more from a person's body.  
• **Four satellite aux exigences Américaines et Canadiennes d'exposition aux radio fréquences, un dispositif de transmission doit fonctionner avec une distance de séparation minimale de 0 cm ou plus de corps d'une personne.**

### Laser Devices

Class 2 laser scanners use a low power, visible light diode. As with any very bright light source such as the sun, the user should avoid staring directly into the light beam. Momentary exposure to a Class 2 laser is not known to be harmful. The following statement is required to comply with US and international regulations.

**Caution:** Use of controls, adjustments, or the performance of procedures other than those specified herein may result in hazardous laser light exposure.

### LED Compliance Statement

Classified as "EXEMPT RISK GROUP" according to IEC 62471:2006 and EN 62471:2008. Pulse duration: Continuous.

### Scanner Labeling

LASER LIGHT-DO NOT STARE INTO BEAM. CLASS 2 LASER PRODUCT. Label located on side of scanner.  
HS-360X Model: HDS-3678-0001 Class 2  
CAUTION—CLASS 2 LASER LIGHT WHEN OPEN. AVOID DIRECT EYE EXPOSURE.  
Complies with 21CFR1040.10 & 1040.11 except for deviations pursuant to Laser Notice NO. 50, dated June 24, 2007 and IEC:EN 60825-1:2007 and/or IEC:EN 60825-1:2014

### Batteries

#### Taiwan - Recycling

#### 「廢電池請回收」

EPA (Environmental Protection Administration) requires dry battery producing or importing firms in accordance with Article 15 of the Waste Disposal Act are required to indicate the recycling marks on the batteries used in sales, giveaway or promotion. Contact a qualified Taiwanese recycler for proper battery disposal.

#### Battery Information

**Caution:** Risk of explosion if battery is replaced by an incorrect type. Dispose of batteries according to instructions.  
Use only Omron Microscan-approved batteries. Accessories which have battery charging capability are approved for use with the following battery models: Part Number 98-900224-01 (3.6 Vdc, 3150 mAh).  
Omron Microscan-approved rechargeable battery packs are designed and constructed to the highest standards within the industry. However, there are limitations to how long a battery can operate or be stored before needing replacement. Many factors affect the actual life cycle of a battery pack, such as heat, cold, harsh environmental conditions and severe drops.  
When batteries are stored over six months, some irreversible deterioration in overall battery quality may occur. Store batteries at half of full charge in a dry, cool place, removed from the equipment to prevent loss of capacity, rusting of metallic parts and electrolyte leakage. When storing batteries for one year or longer, the charge level should be verified at least once a year and charged to half of full charge. Replace the battery when a significant loss of run time is detected.  
Standard warranty period for all Omron Microscan batteries is 30 days, regardless of whether the battery was purchased separately or included as part of the scanner.

### Radio Frequency Interference Requirements - FCC

This equipment has been tested and found to comply with the limits for a Class B digital device, pursuant to Part 15 of the FCC rules. These limits are designed to provide reasonable protection against harmful interference in a residential installation. This equipment generates, uses and can radiate radio frequency energy and, if not installed and used in accordance with the instructions, may cause harmful interference to radio communications. However, there is no guarantee that interference will not occur in a particular installation. If this equipment does cause harmful interference to radio or television reception, which can be determined by turning the equipment off and on, the user is encouraged to try to correct the interference by one or more of the following measures:  
• Reorient or relocate the receiving antenna  
• Increase the separation between the equipment and receiver  
• Connect the equipment into an outlet on a circuit different from that to which the receiver is connected  
• Consult the dealer or an experienced radio/TV technician for help.

**Radio Transmitters (Part 15)**  
This device complies with Part 15 of the FCC Rules. Operation is subject to the following two conditions:  
(1) this device must not cause harmful interference, and  
(2) this device must accept any interference received, including interference that may cause undesired operation.

**Radio Frequency Interference Requirements - Canada**  
CAN ICES-3 (B)/NMB-2(B)  
Radio Transmitters  
This device complies with industry Canada's license-exempt RSSS. Operation is subject to the following two conditions:  
(1) this device must not cause harmful interference and  
(2) this device must accept any interference, including interference that may cause undesired operation of the device.

Cet appareil est conforme exempté de licence le flux RSS de Industrie Canada. Son fonctionnement est soumis aux deux conditions suivantes:  
(1) le dispositif ne peut causer des interférences; et  
(2) cet appareil doit accepter toute interférence, y compris les interférences qui peuvent causer un mauvais fonctionnement de l'appareil.

### Marking and European Economic Area (EEA)

Bluetooth® Wireless Technology for use through the EEA has the following restrictions:  
• Maximum radiated transmit power of 100mW EIRP in the frequency range 2.400-2.4835 GHz.

### Statement of Compliance

Omron Microscanherby declares that this radio equipment is in compliance with directive 2011/65/EU and 1999/5/EC or 2014/53/EU (2014/53/EU supersedes 1999/5/EC from 13th June 2017). The full text of the EU Declaration of Conformity is available at the following internet address: <http://www.microscan.com/support>.

### Other Countries

**Japan (VCCI) - Voluntary Control Council for Interference Class B ITE**  
この装置は、情報処理装置等電波障害自主規制協議会（VCCI）の基準に基づくクラスB情報技術装置です。この装置は、家庭環境で使用することを目的としていますが、この装置がラジオやテレビジョン受信機に近接して使用されると、受信障害を引き起こすことがあります。取扱説明書に従って正しい取り扱いをしてください。

### UKRAINE Warning Statement for Class B ITE

Дане обладнання відповідає вимогам технічного регламенту №1057, № 2008 на обмеження щодо використання деяких небезпечних речовин в електричних та електронних пристроях.

### Chile

Este equipo cumple con la Resolución No 403 de 2008, de la Subsecretaría de telecomunicaciones, relativa a radiación electromagnética.

### China

通过访问以下网址可下载当地语言支持的产品说明书  
<http://www.microscan.com/support>

### Brazil (UNWANTED EMISSIONS - ALL PRODUCTS)

Regulatory declarations for DS3678 - BRAZIL  
For more information consult the website [www.anatel.gov.br](http://www.anatel.gov.br)  
NOTA: A marca de certificação se aplica ao Equip. de Radiação Restrita, modelo DS3678. Este equipamento opera em caráter secundário, isto é, não tem direito a proteção contra interferência prejudicial, mesmo de estações do mesmo tipo, e não pode causar interferência a sistemas operando em caráter primário. Para maiores consultas sobre ANATEL consulte o site: [www.anatel.gov.br](http://www.anatel.gov.br).

### Thailand

เครื่องโทรคมนาคมและอุปกรณ์นี้ มีความสอดคล้องตามข้อกำหนดของ กททช.

### S. Korea

당해 무선설비는 운용 중 전파혼신 가능성이 있음  
당해 무선설비는 전파혼신 가능성이 있으므로 인명안전과 관련된 서비스는 할 수 없습니다.

### Eurasian Customs Union

Евразийский Таможенный Союз  
Данный продукт соответствует требованиям знака ЕАС.

### Battery Safety Guidelines

The area in which the units are charged should be clear of debris and combustible materials or chemicals. Particular care should be taken where the device is charged in a non commercial environment.

- Follow battery usage, storage, and charging guidelines found in the user's guide.
- Improper battery use may result in a fire, explosion, or other hazard.
- To charge the mobile device battery, the battery and charger temperatures must be between +32 °F and +104 °F (0 °C and +40 °C)
- Do not use incompatible batteries and chargers. Use of an incompatible battery or charger may present a risk of fire, explosion, leakage, or other hazard. If you have any questions about the compatibility of a battery or a charger, contact Omron Microscan support.
- For devices that utilize a USB port as a charging source, the device shall only be connected to products that bear the USB-IF logo or have completed the USB-IF compliance program.
- Do not disassemble or open, crush, bend or deform, puncture, or shred.
- Severe impact from dropping any battery-operated device on a hard surface could cause the battery to overheat.
- Do not short circuit a battery or allow metallic or conductive objects to contact the battery terminals.
- Do not modify or re-manufacture, attempt to insert foreign objects into the battery, immerse or expose to water or other liquids, or expose to fire, explosion, or other hazard.
- Do not leave or store the equipment in or near areas that might get very hot, such as in a parked vehicle or near a radiator or other heat source. Do not place battery into a microwave oven or dryer.
- Battery usage by children should be supervised.
- Please follow local regulations to promptly dispose of used re-chargeable batteries.
- Do not dispose of batteries in fire.
- Seek medical advice immediately if a battery has been swallowed.
- In the event of a battery leak, do not allow the liquid to come in contact with the skin or eyes. If contact has been made, wash the affected area with large amounts of water and seek medical advice.
- If you suspect damage to your equipment or battery, contact Omron Microscan support to arrange for inspection.

## OMRON

## MICROSCAN

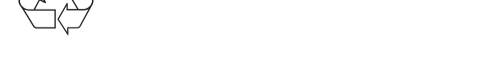
Omron Microscan Systems, Inc.  
Tel: +1.425.226.5700 / 800.762.1149  
Fax: +1.425.226.8250

All rights reserved. The information contained herein is proprietary and is provided solely for the purpose of allowing customers to operate and/or service Omron Microscan-manufactured equipment and is not to be released, reproduced, or used for any other purpose without written permission of Omron Microscan.

©2019 Omron Microscan Systems, Inc.



P/N 83-9310014-02 Rev C



# HS-360X Wireless Handheld DPM Scanner