

INSTRUCTION MANUAL
Bedienungsanleitung
Manuel d'instructions

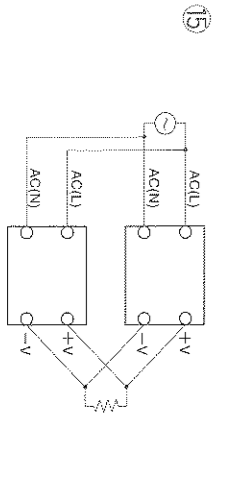
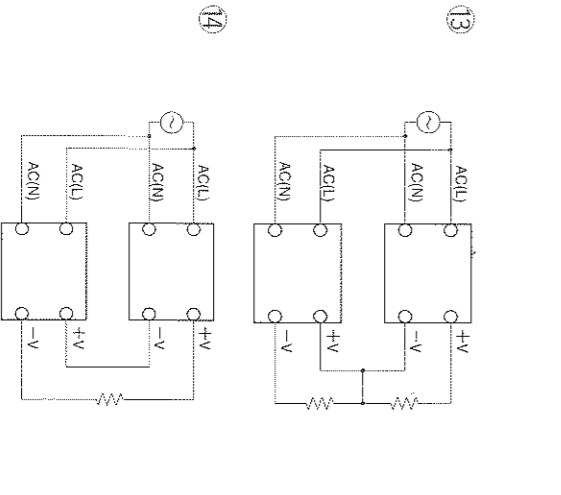
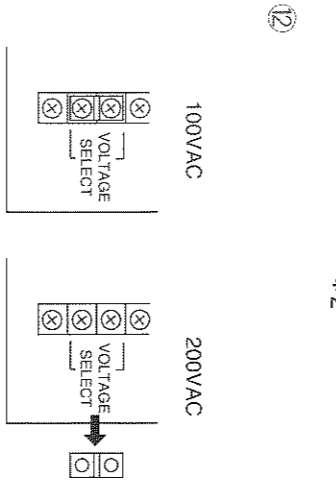
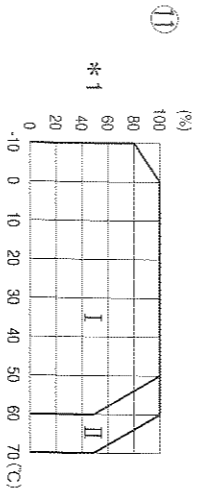
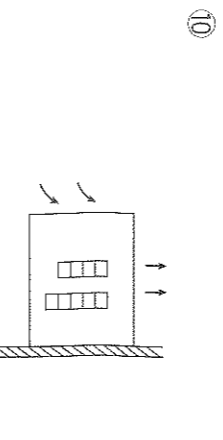
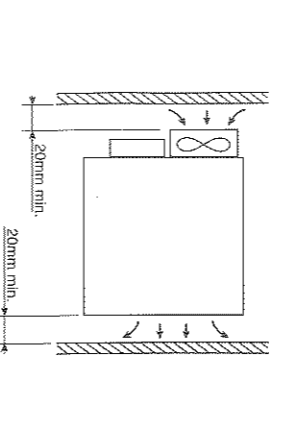
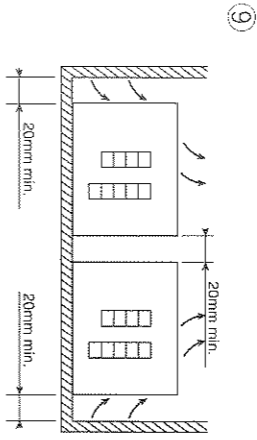
Thank you for purchasing this OMRON product. This manual primarily describes precautions required in installing and wiring the power supply. Before operating the product, read this manual thoroughly to acquire sufficient knowledge of the product to use it safely and correctly. Keep this manual close at hand and use for reference during operation.

Vielen Dank für den Kauf dieses OMRON Produktes. Bevor Sie dieses Netzteil in Betrieb nehmen, machen Sie sich mit dem Produkt ausreichend vertraut, um es sicher und korrekt einzusetzen. Nehmen Sie diese Betriebsanleitung zur Hand, wenn Sie mit dem Gerät arbeiten.

Nous vous remercions d'avoir fait l'acquisition de ce produit OMRON. Avant d'utiliser cette alimentation, veuillez lire attentivement ces instructions afin de vous familiariser avec le produit et de travailler en toute sécurité et correctement. Garder ce manuel à portée de main lors des opérations.

Shikokji Horikawa, Shimogyo-ku,
Kyoto 600, Japan
OMRON Corporation

0682606-1C

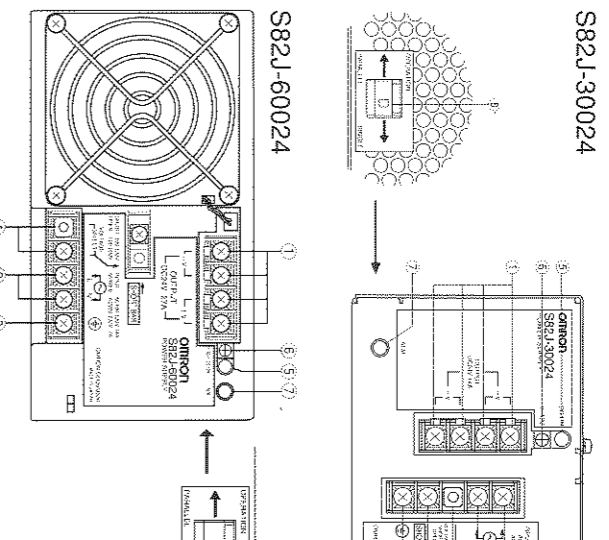


SAFETY INDICATORS

WARNING

Never touch or disassemble the terminals and internal mechanism.
Electric Shock Hazard.

Be sure to connect ground wire.
Electric Shock Hazard.



- Installing Environment**
- Relative humidity: 25 to 85%
 - Avoid places where the product is subjected to direct sunlight.
 - Avoid penetration of metal chips when processing mounting holes.
 - Avoid places where the product is subjected to penetration of solution, foreign substance and corrosive gas.
- Mounting**
- Standard mounting
 - Side mounting

- Notes:**
- Forced air-cooling shall be 1m³/min min.
 - When the S82J-30024 is used in side mounting, set the ambient temperature 10 °C lower.
 - To operate in parallel, the max. operating temperature is as follows:
S82J-30024 (Natural air-cooling): 50°C
S82J-30024 (Forced air-cooling): 60°C
S82J-60024 : 60°C
- Selecting Input Voltage**
- The factory-set is 200 VAC. Short the input voltage selector terminals with a short bar to select 100 VAC.
Short-circuit : 100 VAC (85 to 132 VAC)
Open-circuit : 200 VAC (170 to 253 VAC)
- Generating Output Voltage (±)**
- An output of ± can be generated by using two power supplies.
 - Serial Operation
 - Parallel Operation
- Parallel operation is possible under 80% of heated value.

Derating Curve

① * 1 Load (%)
② * 2 Ambient temperature (°C)

Derating	Natural air cooling	Forced air cooling
S82J-30024	I	I+II
S82J-60024	I	I+II

- Rated dielectric strength:**
- 3000 VAC between input terminals and output terminals for 1 minute.
 - Precautions for testing: Set the break current of the tester to 25 mA. Increase/decrease test voltage gradually.
- Insulation Resistance Test**
- When testing the insulation resistance of the power supply, use a DC ohmmeter at 500 VDC.
- Overload Protection**
- The load and power supply are automatically protected from overcurrent damage by this function. Overload protection operates if the output current rises above 105% of the rated value. When the output current returns within the rated range, overload protection is automatically cleared.
- For the S82J-60024, output is shut off when overload condition is continued for 5 seconds or more, and simultaneously protect function ON indicator lights. If this occurs, to reset the Power supply, turn it off for 3 minutes min., and then turn it on again.
- Note : If the power supply has been short-circuited or supplied with an overcurrent for a long time, the internal elements of power supply may be degraded or damaged.
- Insulation Resistance Test**
- When testing the insulation resistance of the power supply, use a DC ohmmeter at 500 VDC.

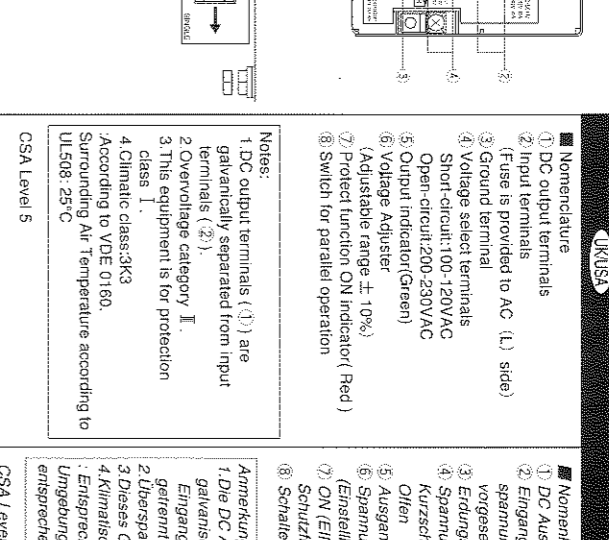
- Overheat Protection (S82J-60024 only)**
- Overheat protection circuit is activated to protect the internal elements from possible damage when the temperature inside the power supply rises due to the stopped fan or other factors. Simultaneously, protect function ON indicator lights. To reset the Power Supply, turn it off for 3 minutes min., and then turn it on again.
- Precautions in Using the product**
- When the product is used under the circumstances or environment below, ensure adherence to limitations of the ratings and functions. Also take countermeasures for safety precautions such as fan-safety installations.
- Use under the circumstances or environment which are not described in the instruction manual.
 - Use for nuclear power control, railway, aircraft vehicle, incinerator, medical equipment, entertainment equipment, safety device etc. ...
 - Use for applications where death or serious property damage is possible and extensive safety precautions are required.

SAFETY PRECAUTIONS ON SAFETY

WARNING

Be careful not to touch or disassemble the terminals and internal mechanism.
Electric Shock Hazard.

Be sure to connect ground wire.
Electric Shock Hazard.



- Installing Environment**
- Relative humidity: 25 to 85%
 - Avoid places where the product is subjected to direct sunlight.
 - Avoid penetration of metal chips when processing mounting holes.
 - Avoid places where the product is subjected to penetration of solution, foreign substance and corrosive gas.
- Mounting**
- Standard mounting
 - Side mounting

- Notes:**
- Forced air-cooling shall be 1m³/min min.
 - When the S82J-30024 is used in side mounting, set the ambient temperature 10 °C lower.
 - To operate in parallel, the max. operating temperature is as follows:
S82J-30024 (Natural air-cooling): 50°C
S82J-30024 (Forced air-cooling): 60°C
S82J-60024 : 60°C
- Selecting Input Voltage**
- The factory-set is 200 VAC. Short the input voltage selector terminals with a short bar to select 100 VAC.
Short-circuit : 100 VAC (85 to 132 VAC)
Open-circuit : 200 VAC (170 to 253 VAC)
- Generating Output Voltage (±)**
- An output of ± can be generated by using two power supplies.
 - Serial Operation
 - Parallel Operation
- Parallel operation is possible under 80% of heated value.

Derating Curve

① * 1 Load (%)
② * 2 Ambient temperature (°C)

Derating	Natural air cooling	Forced air cooling
S82J-30024	I	I+II
S82J-60024	I	I+II

- Rated dielectric strength:**
- 3000 VAC between input terminals and output terminals for 1 minute.
 - Precautions for testing: Set the break current of the tester to 25 mA. Increase/decrease test voltage gradually.
- Insulation Resistance Test**
- When testing the insulation resistance of the power supply, use a DC ohmmeter at 500 VDC.
- Overload Protection**
- The load and power supply are automatically protected from overcurrent damage by this function. Overload protection operates if the output current rises above 105% of the rated value. When the output current returns within the rated range, overload protection is automatically cleared.
- For the S82J-60024, output is shut off when overload condition is continued for 5 seconds or more, and simultaneously protect function ON indicator lights. If this occurs, to reset the Power supply, turn it off for 3 minutes min., and then turn it on again.
- Note : If the power supply has been short-circuited or supplied with an overcurrent for a long time, the internal elements of power supply may be degraded or damaged.
- Insulation Resistance Test**
- When testing the insulation resistance of the power supply, use a DC ohmmeter at 500 VDC.

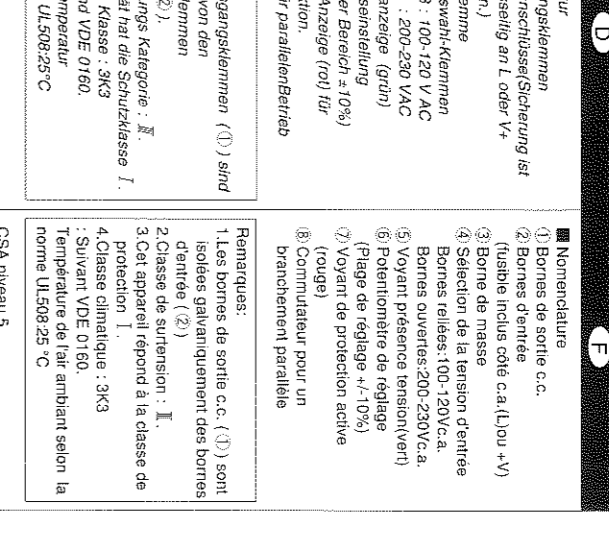
- Overheat Protection (S82J-60024 only)**
- Overheat protection circuit is activated to protect the internal elements from possible damage when the temperature inside the power supply rises due to the stopped fan or other factors. Simultaneously, protect function ON indicator lights. To reset the Power Supply, turn it off for 3 minutes min., and then turn it on again.
- Precautions in Using the product**
- When the product is used under the circumstances or environment below, ensure adherence to limitations of the ratings and functions. Also take countermeasures for safety precautions such as fan-safety installations.
- Use under the circumstances or environment which are not described in the instruction manual.
 - Use for nuclear power control, railway, aircraft vehicle, incinerator, medical equipment, entertainment equipment, safety device etc. ...
 - Use for applications where death or serious property damage is possible and extensive safety precautions are required.

SAFETY PRECAUTIONS ON SAFETY

WARNING

Be careful not to touch or disassemble the terminals and internal mechanism.
Electric Shock Hazard.

Be sure to connect ground wire.
Electric Shock Hazard.



- Installing Environment**
- Relative humidity: 25 to 85%
 - Avoid places where the product is subjected to direct sunlight.
 - Avoid penetration of metal chips when processing mounting holes.
 - Avoid places where the product is subjected to penetration of solution, foreign substance and corrosive gas.
- Mounting**
- Standard mounting
 - Side mounting

- Notes:**
- Forced air-cooling shall be 1m³/min min.
 - When the S82J-30024 is used in side mounting, set the ambient temperature 10 °C lower.
 - To operate in parallel, the max. operating temperature is as follows:
S82J-30024 (Natural air-cooling): 50°C
S82J-30024 (Forced air-cooling): 60°C
S82J-60024 : 60°C
- Selecting Input Voltage**
- The factory-set is 200 VAC. Short the input voltage selector terminals with a short bar to select 100 VAC.
Short-circuit : 100 VAC (85 to 132 VAC)
Open-circuit : 200 VAC (170 to 253 VAC)
- Generating Output Voltage (±)**
- An output of ± can be generated by using two power supplies.
 - Serial Operation
 - Parallel Operation
- Parallel operation is possible under 80% of heated value.

Derating Curve

① * 1 Load (%)
② * 2 Ambient temperature (°C)

Derating	Natural air cooling	Forced air cooling
S82J-30024	I	I+II
S82J-60024	I	I+II

- Rated dielectric strength:**
- 3000 VAC between input terminals and output terminals for 1 minute.
 - Precautions for testing: Set the break current of the tester to 25 mA. Increase/decrease test voltage gradually.
- Insulation Resistance Test**
- When testing the insulation resistance of the power supply, use a DC ohmmeter at 500 VDC.
- Overload Protection**
- The load and power supply are automatically protected from overcurrent damage by this function. Overload protection operates if the output current rises above 105% of the rated value. When the output current returns within the rated range, overload protection is automatically cleared.
- For the S82J-60024, output is shut off when overload condition is continued for 5 seconds or more, and simultaneously protect function ON indicator lights. If this occurs, to reset the Power supply, turn it off for 3 minutes min., and then turn it on again.
- Note : If the power supply has been short-circuited or supplied with an overcurrent for a long time, the internal elements of power supply may be degraded or damaged.
- Insulation Resistance Test**
- When testing the insulation resistance of the power supply, use a DC ohmmeter at 500 VDC.

- Overheat Protection (S82J-60024 only)**
- Overheat protection circuit is activated to protect the internal elements from possible damage when the temperature inside the power supply rises due to the stopped fan or other factors. Simultaneously, protect function ON indicator lights. To reset the Power Supply, turn it off for 3 minutes min., and then turn it on again.
- Precautions in Using the product**
- When the product is used under the circumstances or environment below, ensure adherence to limitations of the ratings and functions. Also take countermeasures for safety precautions such as fan-safety installations.
- Use under the circumstances or environment which are not described in the instruction manual.
 - Use for nuclear power control, railway, aircraft vehicle, incinerator, medical equipment, entertainment equipment, safety device etc. ...
 - Use for applications where death or serious property damage is possible and extensive safety precautions are required.

形 S82J スイッチングパワーサイラ

取扱説明書

Manual de instrucciones

Manual de instrucciones

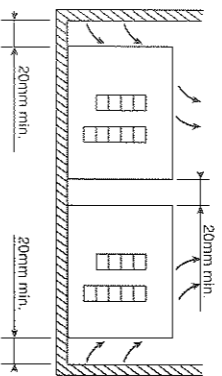
オムロン製品を修理し上げただけではありません。この製品を安全に正しく使用していただくために、お手に届く前にこの取扱説明書をお読みになり、十分にご理解してください。お読みになった後も、いつも手元に置いてご使用ください。

La manutenzione per la preferenza accordataci con l'acquisto di questo prodotto OMRON. Questo foglio di istruzioni descrive le precauzioni da adottare per installare e collegare l'alimentatore. Prima di utilizzare l'alimentatore legga attentamente questo foglio di istruzioni per acquisire le informazioni necessarie ad un uso corretto e sicuro dell'alimentatore. Il presente foglio di istruzioni deve essere conservato per eventuali consultazioni future.

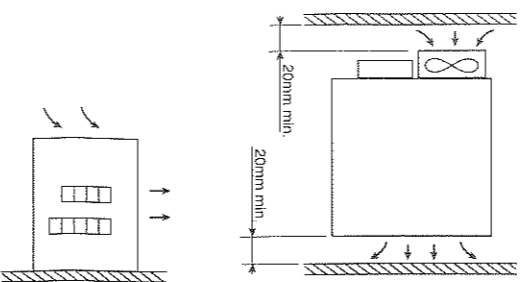
Gracias por adquirir este producto OMRON. Este manual describe las precauciones necesarias para instalar y cablear la fuente de alimentación. Antes de utilizar esta fuente de alimentación, Lea detenidamente este manual para adquirir las informaciones sobre el producto suficientes para utilizarlo correctamente y con seguridad.

オムロン株式会社

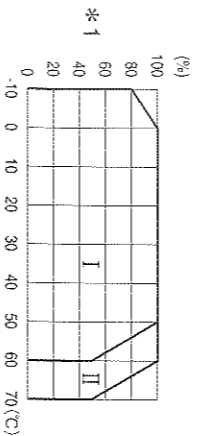
9



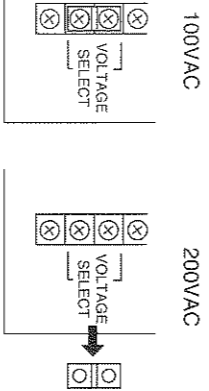
10



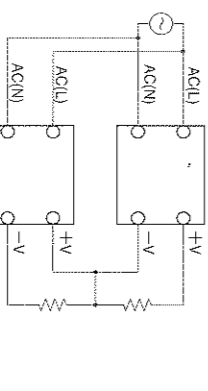
11



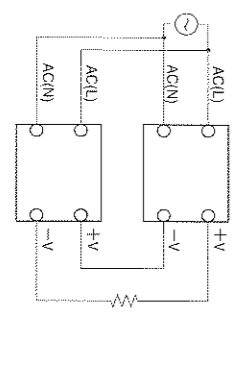
12



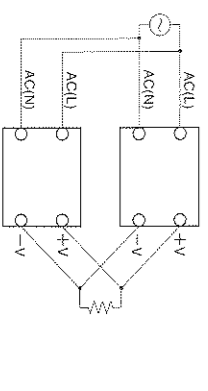
13



14



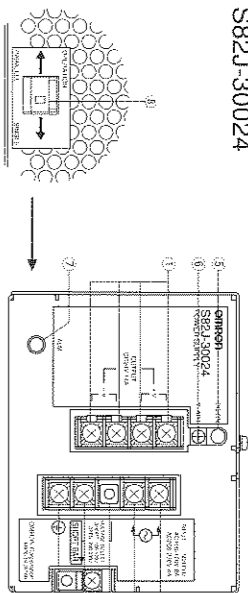
15



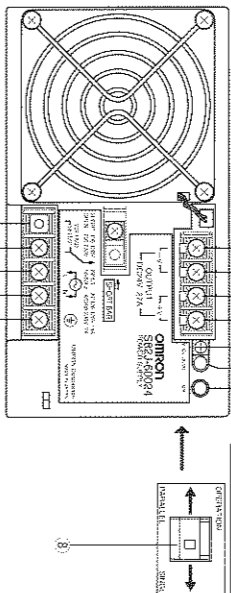
安全上の注意

警告
端子・内部部品に触れたり、分解したりしないでください。
感電の恐れがあります。
必ずケーブル線を接続してください。
感電の恐れがあります。

S82J-30024



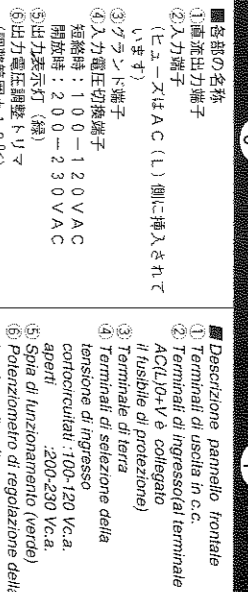
S82J-60024



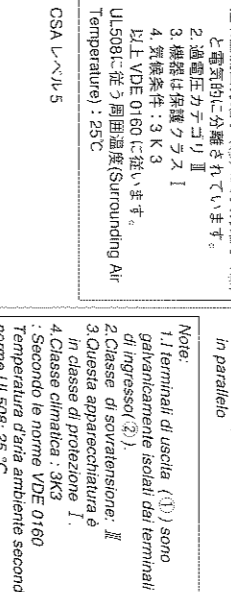
Precauzioni di sicurezza

Avvertenza
Non si tocchino o si smontino i terminali e i meccanismi interni.
Pericolo di scosse elettriche.
Ci si accerti che il collegamento con la terra sia efficace.
Pericolo di scosse elettriche.

S82J-30024



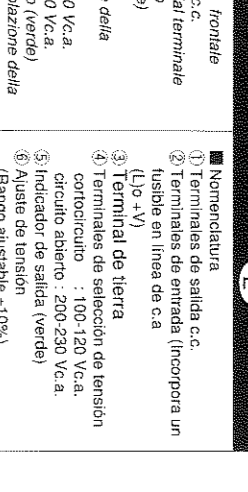
S82J-60024



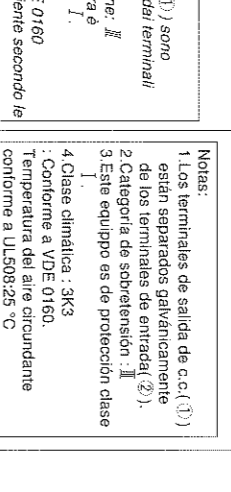
Precauciones relativas a la seguridad

AVISO
No tocar ni desmontar nunca los terminales y el mecanismo interno.
Peligro de descarga eléctrica.
Verificar la conexión del cable de tierra.
Peligro de descarga eléctrica.

S82J-30024



S82J-60024



設置環境について

- 1.湿度25～85%の場所で使用してください。
2.直射日光の当たる場所では使用しないでください。
3.取付加工中に部品が製品内に入らないようにしてください。
4.製品内に液体や異物、腐食性ガスが入る可能性がある場所では使用しないでください。

取付方法について

- 1.取付にあたっては機器の長期信頼性を向上させるために、放熱に十分留意ください。
2.S82J-60024はファンによる強制空冷方式です。冷却効果は低下しますので、通風口(ファン取付面とその反対面)をふさがずしてください。
3.取付ネジの挿入長さ8mm以下とってください。
4.取付面は硬質金属板をお使いください。

テーパーチャート曲線

Table with 2 columns: Output Voltage (V) and Output Current (A) for S82J-30024 and S82J-60024.

入力電圧について
吸出時は200VACに設定しています。100VACで使用する場合は、短絡片にて入力電圧切換端子をショートしてください。

出力電圧(±)
1.2.3.並列運転する場合の最高使用温度は次のとおりです。
短絡：100VAC(85~132VAC)
開放：200VAC(170~253VAC)

並列運転
1.2.3.並列運転が可能なことです。
※定格の80%以下で並列運転が可能です。

前電圧試験
電源は<入力一括>->出力一括の間3000VAC1分間に増えるように設計されています。試験される場合、耐電圧試験機のケーブル出力電圧は試験機のカプラーにて徐々に変化させてください。

絶縁抵抗試験
DC絶縁抵抗計(MAX:500VDC)をご使用ください。
過電流保護機能
定格電流の105%以上で過電流保護回路が動作し、出力電圧を低下させます。

過電圧保護機能
定格出力電圧の120%以上の電圧が出力された場合、出力電圧を遮断し、過電圧による部品の故障を防止します。

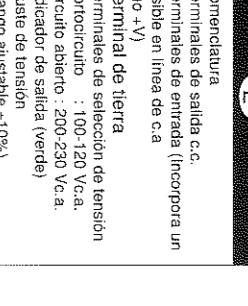
過熱保護機能(S82J-60024のみ)
ファンが停止するにより電源内部の温度が上昇すると、過熱保護回路が動作し内部部品を保護します。

ご使用に際してのお願い
1.取扱説明書に記載のない条件や仕様での使用
2.原子力制御・鉄道・航空・車両・燃焼装置・医療機器・産業機械・安全機器などへの使用
3.人命や財産に大きな影響が予測され、特に安全性が要求される用途への使用

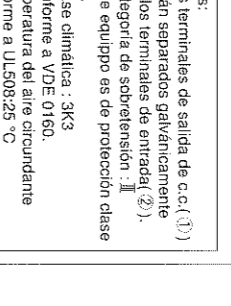
Indicaciones de seguridad

AVISO
No tocar ni desmontar nunca los terminales y el mecanismo interno.
Peligro de descarga eléctrica.
Verificar la conexión del cable de tierra.
Peligro de descarga eléctrica.

S82J-30024



S82J-60024



環境について

- 1.湿度相対湿度25～85%の場所で使用してください。
2.直射日光の当たる場所では使用しないでください。
3.取付加工中に部品が製品内に入らないようにしてください。
4.製品内に液体や異物、腐食性ガスが入る可能性がある場所では使用しないでください。

取付方法について

- 1.取付にあたっては機器の長期信頼性を向上させるために、放熱に十分留意ください。
2.S82J-60024はファンによる強制空冷方式です。冷却効果は低下しますので、通風口(ファン取付面とその反対面)をふさがずしてください。
3.取付ネジの挿入長さ8mm以下とってください。
4.取付面は硬質金属板をお使いください。

テーパーチャート曲線

Table with 2 columns: Output Voltage (V) and Output Current (A) for S82J-30024 and S82J-60024.

入力電圧について
吸出時は200VACに設定しています。100VACで使用する場合は、短絡片にて入力電圧切換端子をショートしてください。

出力電圧(±)
1.2.3.並列運転する場合の最高使用温度は次のとおりです。
短絡：100VAC(85~132VAC)
開放：200VAC(170~253VAC)

並列運転
1.2.3.並列運転が可能なことです。
※定格の80%以下で並列運転が可能です。

前電圧試験
電源は<入力一括>->出力一括の間3000VAC1分間に増えるように設計されています。試験される場合、耐電圧試験機のケーブル出力電圧は試験機のカプラーにて徐々に変化させてください。

絶縁抵抗試験
DC絶縁抵抗計(MAX:500VDC)をご使用ください。
過電流保護機能
定格電流の105%以上で過電流保護回路が動作し、出力電圧を低下させます。

過電圧保護機能
定格出力電圧の120%以上の電圧が出力された場合、出力電圧を遮断し、過電圧による部品の故障を防止します。

過熱保護機能(S82J-60024のみ)
ファンが停止するにより電源内部の温度が上昇すると、過熱保護回路が動作し内部部品を保護します。

ご使用に際してのお願い
1.取扱説明書に記載のない条件や仕様での使用
2.原子力制御・鉄道・航空・車両・燃焼装置・医療機器・産業機械・安全機器などへの使用
3.人命や財産に大きな影響が予測され、特に安全性が要求される用途への使用