

Product Guide

Thank you for purchasing the setup disc of CX-One (CXONE-AL00D-V4).

Before Use

Components

This package includes the following components. Please check that all the components are included in the package.

- Product Guide (this guide) 2
(Be sure to read this guide before using the CX-One.) (Japanese/English)
- Installation Disc (DVD-ROM) 1 set
(Contain the CX-One Applications, the Operation Manuals and other setup data.) (DVD: 1 disc)

Licenses are not included in the setup disc model (CXONE-AL00D-V4).

If you do not have a license number, please purchase a model of CX-One which includes licenses because you need to enter a license number to install the CX-One.

About non-bundled handling to the product of manuals

The Introduction Guides are not bundled in this product by the viewpoint of the global environment protection. The manuals bellow is stored on the CX-One setup disc (DVD-ROM) as PDF file, and can be referred to from the start menu after CX-One installation procedure. Or you can refer the Introduction Guide easily from the Introduction Guide Library on the desktop created after installation.

- CX-One Introduction Guide
- CX-Programmer Introduction Guide
- Function Block and Structured Text Introduction Guide / SFC Introduction Guide
- CX-Designer Introduction Guide / Usage of Smart Active Parts
- CX-Simulator Introduction Guide
- Integrated Simulation Introduction Guide
- CX-Process Introduction Guide
- PLC Connection Cable Selection Guide
- CX-One Setup Manual and the Operation Manuals of each application

Installation/Uninstallation Procedure

For a detailed installation/uninstallation procedures, refer to the CX-One Setup Manual on the setup disc.

The CX-One Setup Manual is included in the following directory:

[DVD] \CX-One_Manuals\English\CX-One Setup Manual W463-E1-□□.pdf

Precautions when Installing the CX-One

- The CX-One cannot be installed from a network drive, such as a DVD drive or hard disk drive shared on a network. Always install the CX-One from a DVD drive on the computer onto which the software is being installed.

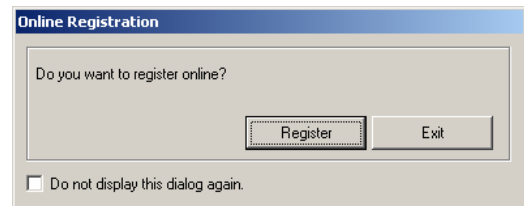
User Registration Procedure

When using the CX-One, confirm the descriptions on the "Software License Agreement". Then, be sure to perform user registration by any of the following methods.

Online User Registration (Internet Connection Required)

Registering from the Online Registration Dialog Box

1. The Online Registration Dialog Box will be displayed after the computer is restarted upon completion of CX-One installation.
2. Click the **Register** Button. A wizard will connect you to the OMRON CX-One website. (See note.)



Note: If the Exit Button is clicked to cancel online registration, the Online Registration Dialog Box will be displayed every time Support Software in the CX-One is started.

3. Enter the information required for user registration according to the site windows.
4. After completion of registration, registration confirmation will be sent to the email address input during the registration procedure.

Registering from the CX-Programmer or Other Support Software in CX-One

OMRON's CX-One website will be displayed if **Help - Online Registration** is selected from the menu bar of CX-Programmer or other Support Software in the CX-One. Enter the information required for user registration according to the site windows

- Note:**
- Use the product key and license number given on the Software License Agreement/ User Registration Card provided with the CX-One which includes licenses.
 - Do not register more than once. For example, if you're returned the card, do not register online.
 - The Online Registration Dialog Box will be displayed even if online registration has already been completed. If this happen, select the *Do not display this dialog again* option and click the **Exit** Button. Also use this procedure in the following cases.
 - The Windows login name is different from the registered name.
 - User registration was performed using the User Registration Postcard.

Using the User Registration Postcard

Enter the required information on the User Registration Postcard provided with the CX-One which includes licenses and send the card.

Note: Downloading service of the OMRON Standard Libraries and other updated files can be available just after registration is finished. Please wait the announcement of registration to you.

Auto Update Service

CX-One version 4 allows you to install CX-One updates released in the future through the Internet by using the CX-One Auto Update Service. To use this service, you must have a SYSMAC ID. To obtain a SYSMAC ID, perform the procedure in *User Registration Procedure* given above.

Preparations for Executing the Auto Update Service

- End all application programs running on Windows before executing the update.
- Execute the update while connected to the Internet.
- The update may fail if you are using a proxy server. If that happens, make the following setting (if you are using Internet Explorer).
 1. Select **Control Panel - Internet Options**.
 2. On the Advanced Tab Page, clear the *Use HTTP 1.1 through proxy connections* Option.

Executing the Auto Update Service

Select **All Programs - OMRON - CX-One – OMRON Automation Software AutoUpdate** from the Windows Start Menu. If a suitable update is available, proceed as instructed on the screen. If there is no update available, execution will end.