

INSTRUCTION SHEET

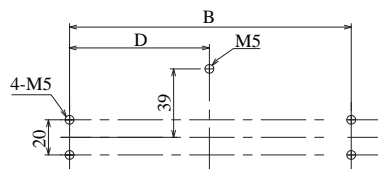
Thank you for purchasing an OMRON product. To ensure the safe use of this product, please read and thoroughly understand this document before use.

When you are finished reading this document, please keep it where you can refer to it when necessary.

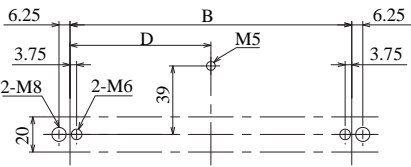
OMRON Corporation
© OMRON Corporation 2005-2020 All Rights Reserved.

[Dimensional Drawing: Backside Mounting]

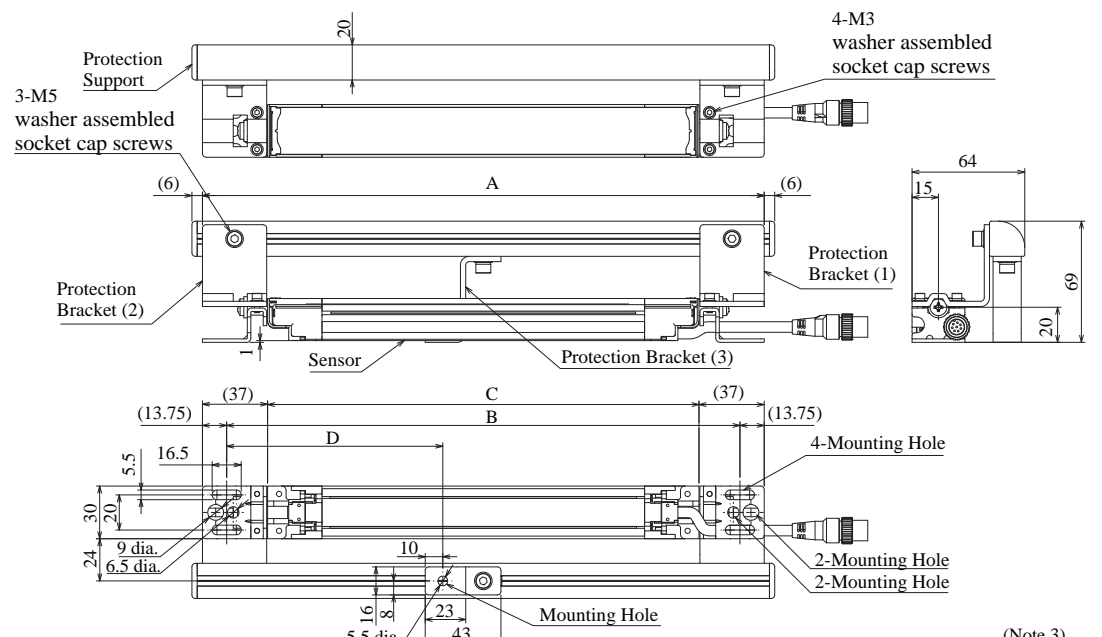
Dimension for mounting hole for M5



Dimension for mounting hole for M6/8



- Note 1: Indicates outer dimension for backside mounting
- Note 2: See table on the right for model dimensions
- Note 3: D is a reference value and must be a length that will not affect the intermediate mounting bracket



C: Total Sensor Length
Length A: A = C + 74
Length B: B = C + 46.5
(Unit: mm)

Model	Q'ty	D
F39-PJ0245-S~F39-PJ0995-S	0	-
F39-PJ1001-S~F39-PJ2000-S	1	B/2
F39-PJ2009-S~F39-PJ2495-S	2	B/3

NOTE

- 1.Ensure safe handling of protection supports during installation. Mishandling may result in injury.
- 2.Ensure that protection supports and brackets are securely mounted to sensors prior to use. Failure to mount may cause protection supports to fall away, resulting in danger.
- 3.This product prevents a workpiece from coming into contact with the F3SJ detection surface and causing damage. Do not use it for anything other than its originally intended use.

PRECAUTIONS FOR CORRECT USE

Clamping strength must not exceed the maximum values shown below:

- M3: About 0.54 N·m max. (about 5.5 kgf·cm)
- M5: About 2.3 N·m max. (about 23.4 kgf·cm)

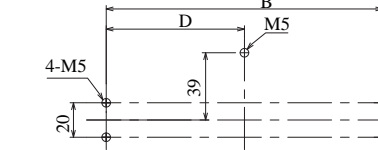
[Type and Quantity of Components]

Component (Material)	Model F39-PJ□□□□-S		
	0245-0995	1001-2000	2009-2495
Protection Support (Aluminum)	1		
Protection Bracket (1) (Stainless Steel)	1		
Protection Bracket (2) (Stainless Steel)	1		
Protection Bracket (3) (Stainless Steel)	0	1	2
Protection Bracket (4)*1 (Stainless Steel)	0	1	2
Stopper (Polypropylene)	0	1	2
Stopper Nut (Stainless Steel)	0	1	2
Washer assembled socket cap screws(M3) (Stainless Steel)	4		
Washer assembled socket cap screws(M5) (Stainless Steel)	2	3	4

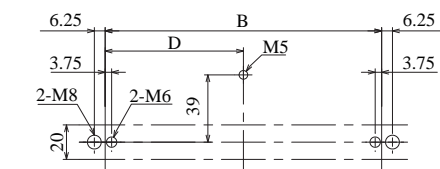
*1 Protection bracket (4) is optional.

[Dimensional Drawing: Side Mounting]

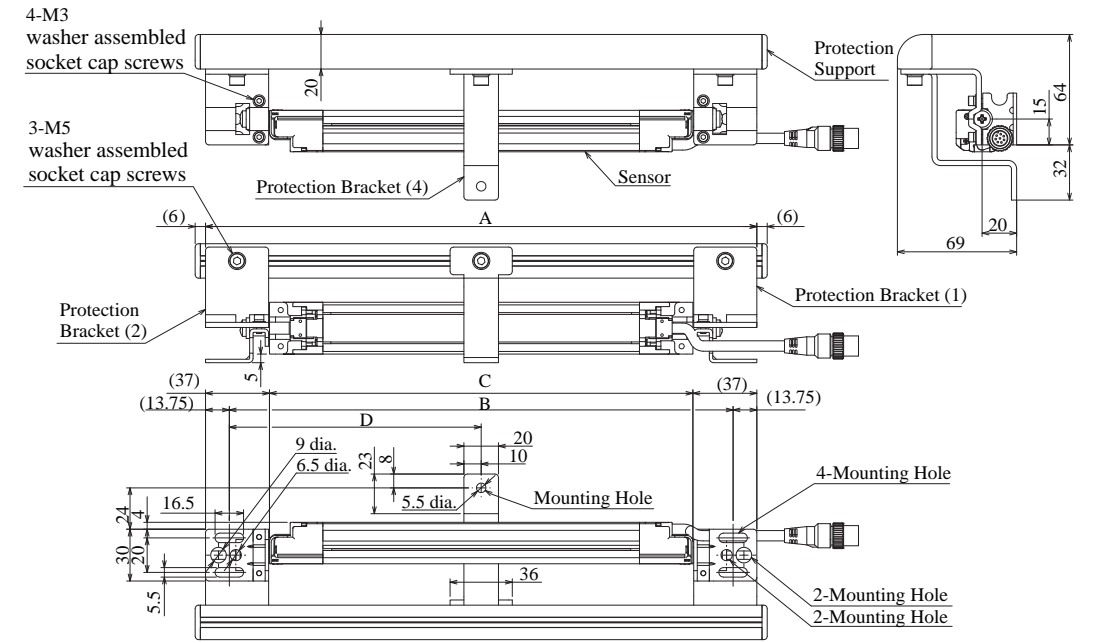
Dimension for mounting hole for M5



Dimension for mounting hole for M6/8



- Note 1: Indicates outer dimension for side mounting
- Note 2: See table on the right for model dimensions
- Note 3: D is a reference value and must be a length that will not affect the intermediate mounting bracket



C: Total Sensor Length
Length A: A = C + 74
Length B: B = C + 46.5
(Unit: mm)

Model	Q'ty	D
F39-PJ0245-S~F39-PJ0995-S	0	-
F39-PJ1001-S~F39-PJ2000-S	1	B/2
F39-PJ2009-S~F39-PJ2495-S	2	B/3

[Assembly Procedure]

1. Remove the top/bottom mounting bracket screws (included with F3SJ) and detach the top/bottom mounting brackets (2) (Fig. 1). Attach protection brackets (1) and (2) to the top/bottom mounting brackets (1) using washer assembled socket cap screws(M3). Tighten both bolts alternately at the same time. The protection bracket may be tilted if the bolts are tightened one at a time.
2. Insert the stopper into the rail that the protection bracket (3) or (4) must be attached, then insert the stopper nut (Fig. 3). [Only for protectors of model F39-PJ1001-S or higher] Note that backside mounting and side mounting rails for stoppers are different (Fig. 4, 5).
3. Attach the protection support using protection brackets (1) and (2) on the F3SJ and washer assembled socket cap screws(M5). (Stopper nuts used for protection brackets (1) and (2) are already attached (Fig. 4))
4. For the backside mounting, mount a protection bracket (3) on the protection support using a washer assembled socket cap screws(M5) as shown in dimensional drawing above and Fig. 4. For the side mounting, mount a protection bracket (4) as shown in dimensional drawing above and Fig. 5.

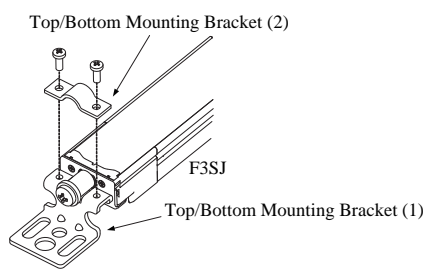


Fig. 1 Detaching Top/Bottom Mounting Brackets

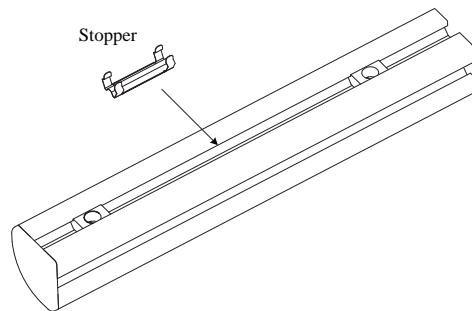


Fig. 2 Mounting a Stopper

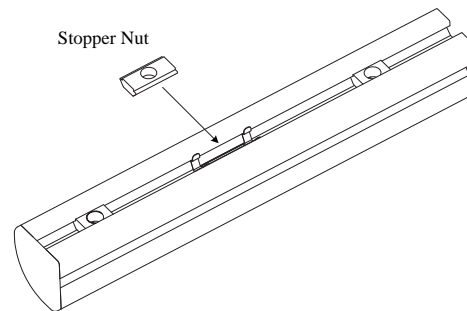


Fig. 3 Mounting a Stopper Nut

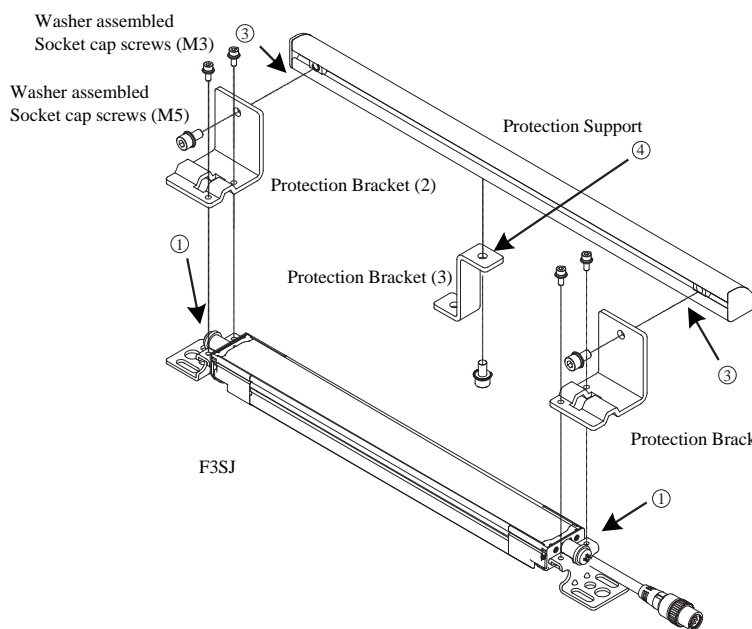


Fig. 4 Assembly Diagram (Backside Mounting)

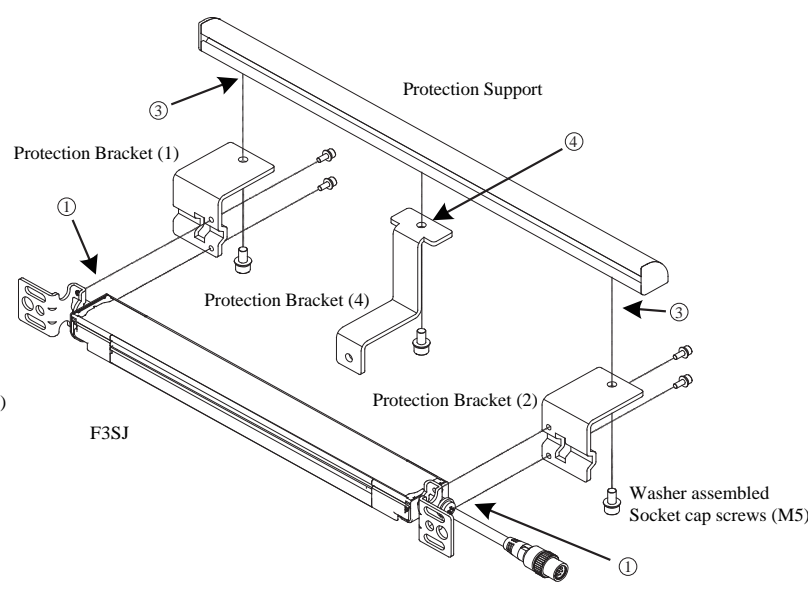


Fig. 5 Assembly Diagram (Side Mounting)

Suitability for Use

Omron Companies shall not be responsible for conformity with any standards, codes or regulations which apply to the combination of the Product in the Buyer's application or use of the Product. At Buyer's request, Omron will provide applicable third party certification documents identifying ratings and limitations of use which apply to the Product. This information by itself is not sufficient for a complete determination of the suitability of the Product in combination with the end product, machine, system, or other application or use. Buyer shall be solely responsible for determining appropriateness of the particular Product with respect to Buyer's application, product or system. Buyer shall take application responsibility in all cases.

NEVER USE THE PRODUCT FOR AN APPLICATION INVOLVING SERIOUS RISK TO LIFE OR PROPERTY OR IN LARGE QUANTITIES WITHOUT ENSURING THAT THE SYSTEM AS A WHOLE HAS BEEN DESIGNED TO ADDRESS THE RISKS, AND THAT THE OMRON PRODUCT(S) IS PROPERLY RATED AND INSTALLED FOR THE INTENDED USE WITHIN THE OVERALL EQUIPMENT OR SYSTEM.

OMRON Corporation (Manufacturer)
Shiokoji Horikawa, Shimogyo-ku, Kyoto, 600-8530 JAPAN
Contact: www.ia.omron.com

Regional Headquarters

- **OMRON EUROPE B.V. (Importer in EU)**
Wegalaan 67-69, 2132 JD Hoofddorp
The Netherlands
Tel: (31)2356-81-300/Fax: (31)2356-81-388
- **OMRON ELECTRONICS LLC**
2895 Greenspoint Parkway, Suite 200
Hoffman Estates, IL 60169 U.S.A.
Tel: (1) 847-843-7900/Fax: (1) 847-843-7787
- **OMRON ASIA PACIFIC PTE. LTD.**
No. 438A Alexandra Road # 05-05/08 (Lobby 2),
Alexandra Technopark,
Singapore 119967
Tel: (65) 6835-3011/Fax: (65) 6835-2711
- **OMRON (CHINA) CO., LTD.**
Room 2211, Bank of China Tower,
200 Yin Cheng Zhong Road,
PuDong New Area, Shanghai, 200120, China
Tel: (86) 21-5037-2222/Fax: (86) 21-5037-2200